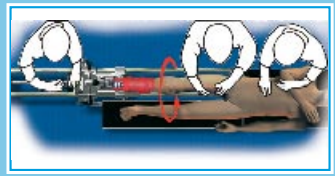
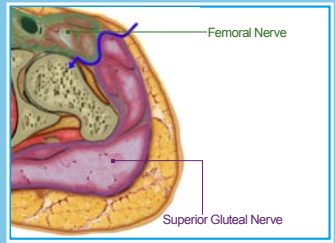
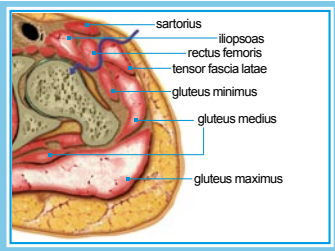


**AMIS®: REDEFINING MIS IN THR**

The anterior approach for total hip replacement is the only technique which follows a path which is both intermuscular and internervous. For this reason the Anterior Minimally Invasive Surgery (= AMIS® approach), is the ideal approach for atraumatic surgery which is fundamental for a fast recovery.

The AMIS® Mobile Leg Positioner is not a complete table but just an orthopaedic table extension which allows an optimum and reproducible leg positioning during AMIS® surgery. It connects to any existing orthopaedic table of any brand.



The AMIS® Mobile Leg Positioner makes the surgery easier, reproducible and simple:

- Easy extraction of the femoral head;
- Reproducible exposure of the femur and the acetabulum;
- Multiple tasks (traction, flexion, hyper-extension, rotation, adduction);
- Reduction aid and possibility of testing without removing the shoe;
- Simple handling by one person;
- Easily moved from one operating theatre to the other.
- Reduced surgical team.

**AMIS® AND MEDACTA®: LEADING THE ANTERIOR APPROACH WORLDWIDE**

**medacta**  
International

**Medacta International**  
Strada Regina  
6874 Castel San Pietro - Switzerland  
Phone +41 91 696 60 60 - Fax +41 91 696 60 66  
Info@medacta.ch

www.medacta.com

AMIS Mobile leg positioner  
ref: 99.98.11LP  
rev. 00

**AMIS® MOBILE LEG POSITIONER**

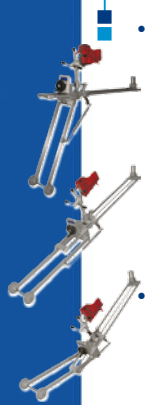
WE MADE IT EASIER



**PATENTED**  
U.S. Pat. no. 7.316.040,  
EP Publ. no. 1.604.629

**REDEFINING MIS IN THR**

**AMIS® MOBILE LEG POSITIONER: ALWAYS A STEP AHEAD!**



**Automatic Traction Release**

The AMIS® Mobile Leg Positioner is the only table extension on the market which releases automatically the traction during hyper-extension avoiding any risk to damage thus nerves and soft tissues (Patented system).

**Deep hyper-extension**

that allows an easier exposition of the femur.



**Easy connection to adapted to your operating table**

AMIS® Mobile Leg Positioner is the only table extension on the market that can be easily connected to any existing operating table of any brand. A support for the opposite leg is also available.

**Very good rotational stability**

thanks to a stable and secure foot positioning.

**Optimal rotation center**

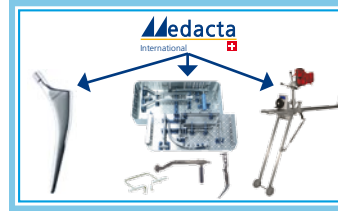
in order to respect the best biomechanical condition during internal and external rotation tasks.



**Fluoroscopy possible**

thanks to a slim design. In some cases the use of the Universal Table is required.

**AMIS® AND MEDACTA®: WE MADE IT EASIER**



**Single contact**

Medacta® will be your unique contact for implants, instruments and leg positioner; simplifying your work, providing expertise and training in the anterior approach.

**Continuous education support**

The AMIS® Education Program includes a specific education and continuous support for the operating room staff. With AMIS® you will never be alone!



**Cost is zero!**

The AMIS® Mobile Leg Positioner is provided as part of the instrumentation, there is no additional cost to your hospital!

**Proven system**

With more than 20'000\* AMIS® implantations since 2004. A knowledge unique in the market!

\* data on December 2008

